

2015 BYOT Trial

(Bring your own technology)

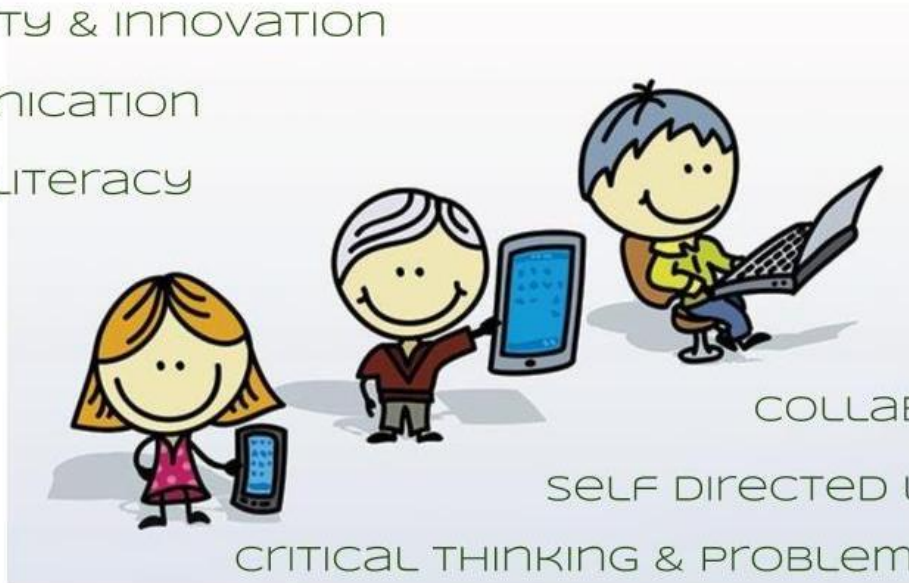
Information for Parents

USING TECHNOLOGY TO SUPPORT THE ACQUISITION OF 21ST CENTURY SKILLS

creativity & innovation

communication

DIGITAL LITERACY



COLLABORATION

SELF DIRECTED LEARNING

CRITICAL THINKING & PROBLEM SOLVING

The term “21st Century Skills” refers to a broad set of knowledge, skills, work habits and character traits that are believed to be critically important to success in today’s world.

Today’s curriculum is focused on **skills** for learning - “21st Century Skills”. In the past, the education system focused on learning specific content.

Students bringing their own technology to school will support the shift in teaching and learning for both students and teachers as we focus on these essential skills.

Technology access has become an integral part of the world students live in and should be integral to their learning lives. The “normalisation” of technology will make learning a part of their life.

From the beginning of 2015, Reidy Park Primary School is trialling students in grades 6 and 7 bringing their own technology to school to support their learning. ***It is not compulsory for students to be involved in the BYOT trial.***

What is BYOT? (BYOD)

“BYOT” is a model where students *bring their own technology* to school to access the internet, apps and tools to support learning.

Why BYOT?

Many students have in their hands powerful technology that they are using outside of school.

- BYOT is about home and school collaboration; normalising the use of technology at home and at school.
- Students use of their own technology in the classroom assists their learning and whenever relevant complements education outside the classroom.
- BYOT is based on trust in and respect for the learner, the desire to better individualise learning.
- BYOT embraces the belief that the role of school is to assist each young person to gradually take control of their own learning.
- BYOT relies on web based applications, such as Google Docs, enabling any device (that meets minimum specifications) to be used rather than specifying a certain type of device. For example an android device or an iPad would be able to work on the same task.

All students will have access to various technology at school. With some students bringing their own technology to assist them with their learning, access to school technology will increase for others.

Keeping in mind that BYOT will be 'new ground' for students and teachers, the desired outcomes of this trial involve...

Students ...

- becoming more self directed learners. Research suggests BYOT increases student motivation and engagement.
- learning about the 'powerful' tools they possess and how they can support their learning.

Teachers...

- becoming more student centred in their practice. We will see our teachers become managers of learning rather than a direct source of information.
- having the ability to meet an expectation from students that they can have a device to access the information they need when they need it.

What will be allowed?

In 2015 parents of students in grade 6 and 7 will be able to make arrangements with their children about bringing laptops, netbooks, iPads or tablets to school. Devices need to have the capacity to access the school WiFi internet (school filters will apply).

Minimum device specifications

Laptop - Windows 7
Chromebook
iPad - model 2
(includes mini)
Android - version 4

Some basic organisation rules will apply:

For example,

- devices must be fully charged - no power supply will be accessed at school;
- students will not be allowed to use their devices at recess or lunch; the device will be kept secure in classrooms;
- students will have to register their device to access WiFi; 3G access is not permitted at school.

To support BYOT at Reidy Park Primary School teachers and students will use Google Apps for Education (GAFE).

What is Google Apps for Education (GAFE)?

GAFE is a web based environment that allows students and teachers to collaborate, create, present and research more effectively in the online environment. GAFE is not dependent upon specific devices (eg. Laptop, iPad or tablet) or software (eg. Microsoft). Students only need access to the internet to participate in this learning environment. Students *will not* have access to Gmail (email) at this stage. Students will use:

Google Drive and Docs - Creation tools that gives students the power to design presentations, documents and spread sheets online and in collaboration with their peers and teachers in real-time!

Google Sites & Google Blogger - Tools that will provide a digital platform for students to share their learning.

Third Party Apps – Cloud based applications that will support learning and are not owned by Google. For example, Edmodo.

Data ownership and management

Reidy Park Primary School continues to maintain ownership of our data, **not** Google. You may already be familiar with Google's cloud-based products; however there are some key differences between a Google consumer account and a GAFE account. Most importantly, Google does not sell students' information. GAFE offers schools a number of additional controls and security features such as monitoring student accounts.

Third Party Apps (Apps that are not a part of Google Apps for Education)

Various third party apps are planned to be used in the classroom as part of the cloud learning environment. GAFE does not share or reveal private user content. Information shared when accessing third party apps is limited to the school email address of the student for the purpose of saving the works they create.

Google Apps for Education is not ad-supported.

Advertising is turned off in Google Apps for Education. This means your child's content is not scanned or processed by Google's advertising systems, and will also not be targeted by any advertising when using Google Apps for Education.

Your Child's Information and Request for Consent.

Your child's personal information will be shared with Google to open an account under our Google Apps for Education domain. Before an account can be created for your child, we are obliged under the Commonwealth Privacy Act (1988) to advise you of the reasons for collecting the information, what will be done with it and who else may have access to it.

To provide your child with a Google Apps for Education Account and access to its services for the purpose of education, we will need to provide the following personal information to Google:

- Full name
- Student ID number
- School

If you require further information please contact the school or visit <http://www.google.com/enterprise/apps/education/>



Reidy Park Primary School BYOT Trial

Participant Guidelines

For the purposes of Reidy Park Primary School's Bring Your Own Technology Policy, electronic devices include laptops, tablets/iPads, Chromebooks and e-Readers. Mobile phones, iPods, cameras, MP3 Players, gaming devices or any other devices are not permitted.

The following guidelines are in conjunction with Digital Citizenship at Reidy Park Primary School Acceptable Use Agreement.

1. Personally owned technology may be brought to school by students in Years 6 and 7 who have returned a Use Agreement and BYOT Permission Form that has been signed by the parent and student.
2. Personally owned technology may be used only at the direction of class teachers for activities linked to class learning programs. Students will comply with teacher requests to shut down or close the screen.
3. Students and families are responsible for the proper care of their personal device, including all maintenance and repair, and software updates necessary to effectively use the device.
4. Reidy Park Primary School does not accept any responsibility for any damages to personally owned technology or data stored on the device. It is the family's responsibility to ensure data is backed up and to have appropriate insurance coverage.
5. Students must only use Reidy Park Primary School's filtered wireless network to connect their technology to the internet. The use of 3G or 4G wireless connections are not permitted.

6. Students are responsible for bringing their technology to school fully charged, with appropriate protective bags/cases and labelled for identification.
7. School owned technology will continue to be available for **all** students and classrooms.
8. Students agree to only view, listen, create or access school appropriate content on their personal technology while at school. Copyrighted content such as music, games or movies and the like is not to be transferred to other devices or Reidy Park Primary School's network.
9. Students may not use their technology to record, transmit or post photos or video of a person or persons on school grounds. Nor can any images or video recorded at school be transmitted or posted at any time without the express permission of a teacher.
10. Students agree to use their Google Apps for Education account for school purposes only.
11. Reidy Park Primary School reserves the right to confiscate a student's personal technology if there is reason to believe that the student has violated DECD policies, administrative procedures, school agreements or has engaged in other misconduct while using their personal technology.
12. Violations of any DECD policies, administrative procedures or school rules involving a student's personally owned device may result in the loss of use of the device in school and/or disciplinary action.

Frequently Asked Questions

Are children disadvantaged if they don't bring a device to school?

No. Children in Years 6 and 7 will continue to have access the computer pods outside their classrooms.

Does the device need to have 3G, 4G connectivity?

No. Children will be required to connect their device wirelessly to our filtered school network.

Will this increase 'screen time' for children?

Not really. Children will continue to work in a balanced learning program with technologies adding to the quality of that learning. What will change is 'just in time' access, better organisation and an ability to continue working on things when inspiration strikes.

Will children use the device during lunch and recess?

No. Lunch and recess are for running around, playing with friends and getting some fresh air.

What will happen if children use a device for anything other than the learning program?

We already ask families to sign an Digital Citizenship at RPPS Acceptable Use Agreement (previously named Cybersafey Use Agreement) for the use of school devices. We have slightly modified this to now include children's personal devices.

What about insurance?

The device will need to be covered by your home insurance as the school cannot replace lost, damaged or stolen personal equipment.



You can view and download a digital copy of this agreement by following the links below.

<http://goo.gl/iZROsT>



Reidy Park Primary School GAFE & BYOT Trial

Participant Agreement

Students and parents participating in this trial must adhere to our school code of conduct, Digital Citizenship at RPPS Acceptable Use Agreement as well as all DECD policies.

There are 2 sections that require permissions. Not all students will participate in B.Y.O.T. but may still have permission to use Google Apps for Education (GAFE).

No student will be permitted to use GAFE or their personal technology devices unless this agreement is signed and returned.

Please read carefully and tick each statement that applies to you and your child:

- GAFE Permissions**
- I have read the information detailing how my child's data will be used to create a Google Apps for Education account.
 - I give permission for my child to have a GAFE account.
-
- B.Y.O.T. Permissions**
- Students and families take full responsibility for their personal technology.
 - Students must comply with teachers' requests to shut down devices or close the screen. Devices must be in silent mode and put away when asked by teachers.
 - Students are not permitted to transmit or post photographic images/videos of any person at school on public and/or social networking sites.
 - Personal devices must be charged prior to bringing them to school. Charging stations will not be available.
 - To ensure appropriate network filters, students will only use RPPS's wireless connection in school and will not attempt to bypass the network restrictions by using 3G or 4G network.
 - Students understand that bringing devices on premises or infecting the network with a Virus, Trojan, or program designed to damage, alter, destroy, or provide access to unauthorized data or information intentionally is in violation of the DECD policy and will result in disciplinary actions.
 - RPPS has the right to confiscate any technology that is suspected of causing problems or is the source of an attack or virus infection.
 - Students and families understand that the use of personal technology to support educational experience is not a necessity but a privilege.

I understand and will abide by the above policy and guidelines. I further understand that any violation may result in the loss of my technology privileges as well as other disciplinary action.

Student Name: _____ **Room:** _____ **Date:** _____

Student to print or sign name

Parent/Carer Signature